



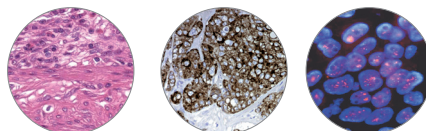
MILESTONE
H E L P I N G
P A T I E N T S



LOGOS One

The first all-in-one rapid tissue processor

- Rapid, fully automated single retort
 - Rapid, simultaneous dual retort
- State-of-the-art resistance heating



Lean lab? Think LOGOS One.

Addressing the needs of “lean” labs for a flexible tissue processor.
Highly adaptable to customized workflow streams.

- ✓ Fully automated processing in overnight and rapid mode
- ✓ Parallel processing in continuous flexible-size batch mode
- ✓ Up to 140 cassettes with 1 gallon standard reagent containers
- ✓ Up to 210/300 cassettes with 5 liter reagent containers
- ✓ Any type of tissue, up to 6 mm thickness

LOGOS One

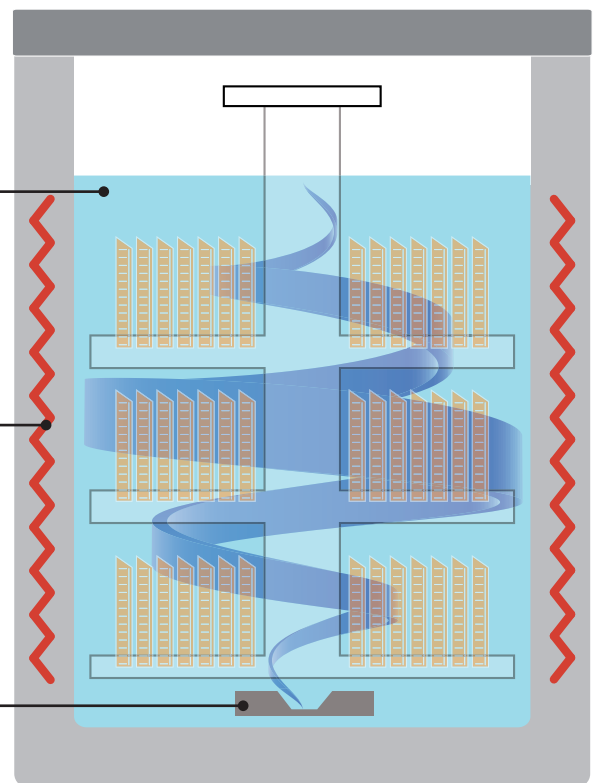
This is our method for a rapid and optimal tissue-processing:

- Reduced number of chemical steps
- Fast ramping time and precise temperature control
- Optimal reagent diffusion

The **Logos One** is able to carry out rapid protocols with 1 step of ethanol and 1 step of isopropanol only, thanks to its advanced processing retort heating system.

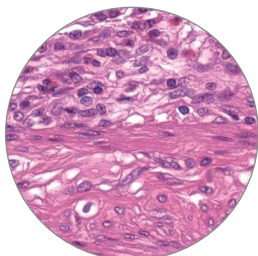
The resistive heating elements, built in the aluminium retort walls, ensure a fast and homogeneous temperature increase of the reagents, to the pre-set processing values.

The diffusion of the reagent is guaranteed by an high efficient magnetic stirrer bar at the bottom of the retort, thus ensuring the optimal execution of the dedicated processing protocols in all cassette rack positions.

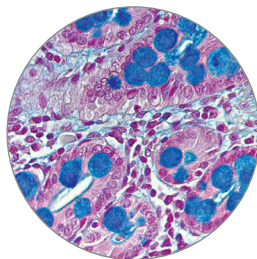


LOGOS One. Reagent processing retort

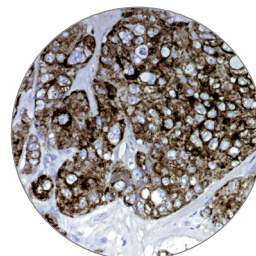
Consistent high quality slides with Milestone processing



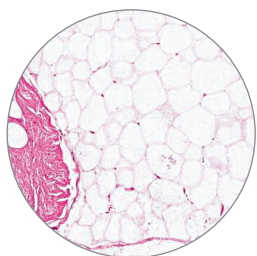
*Colon biopsy
H&E (x 400)*



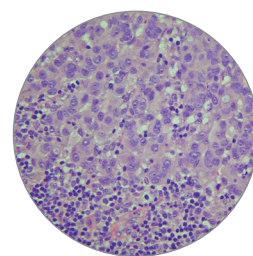
*Bowel biopsy.
Alcian blue staining of mucin
producing cells (x 400)*



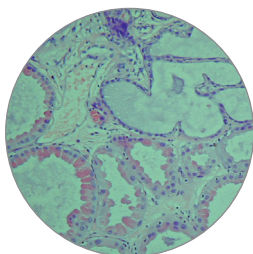
*Adenocarcinoma.
Immunostaining
of Cytokeratin CAM5.2.*



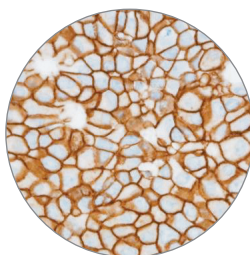
Breast biopsy H&E (x 50)



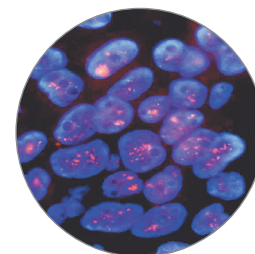
*Metastatic breast cancer in
lymph node, H&E (x 400)*



*Benign breast tissues.
Note the excellent
morphological preservation
H&E (x 200)*



*Breast cells HER2 amplification
detection by IHC.
Hematoxylin counterstain (x 400)*



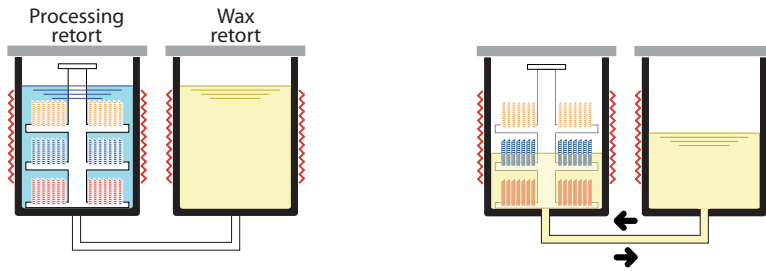
*Breast cells HER2 amplification
detection by FISH.
Red-labeled HER2 probe (x 800)*

LOGOS One. Innovative workflow options for the “lean” lab



Night Operation

As a fully automated, single retort, **overnight tissue processor**

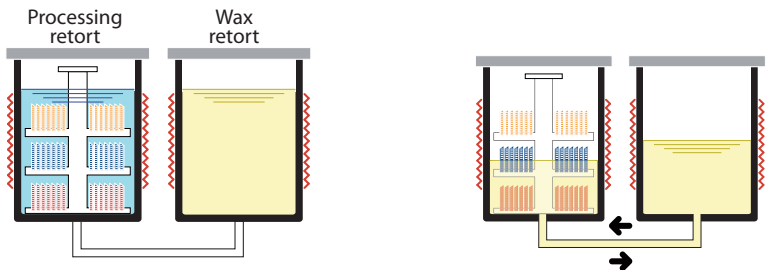


During the night, **LOGOS One** can run protocols as an advanced resistance heated conventional processor. Molten wax is automatically transferred to and from the processing retort for the impregnation step. Xylene-free protocols with four reagents only: formalin, ethanol, isopropanol and wax. If required, xylene protocols are available. As an alternative, run **LOGOS One** as a rapid tissue processor (delayed start) with desired completion time set by user, allowing additional fixation time, if needed.



Day Operation (1)

As a fully automated, single retort, **rapid tissue processor**

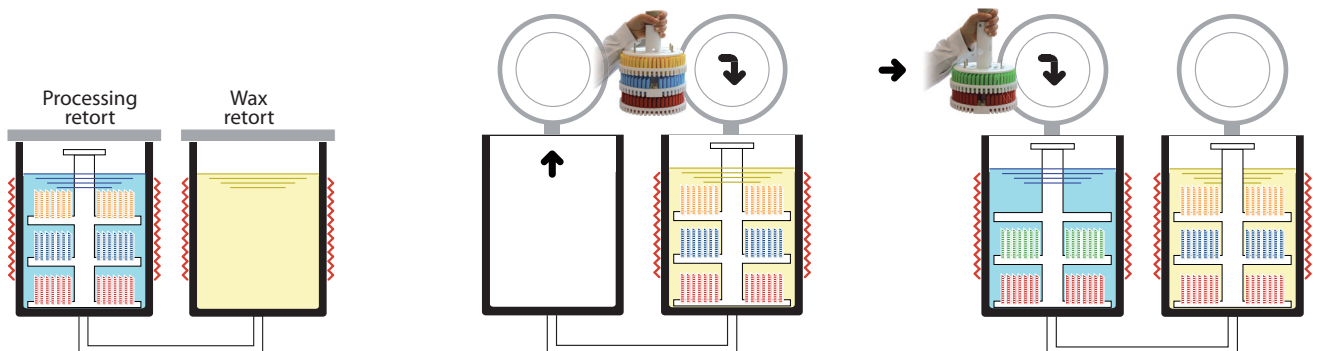


During the day, **LOGOS One** can run urgent biopsies as a fully automated unit. Molten wax is automatically transferred to and from the processing retort for the impregnation step. This mode enables single batch runs with short cleaning cycles.



Day Operation (2)

As a sequential, dual retort, **simultaneous batch tissue processor**



- 1 The first rack undergoes fixation/dehydration/clearing in the processing retort.
- 2 At the end of the processing cycle, the rack is manually transferred to the wax retort.
- 3 A new rack is placed in the processing retort. The two racks are simultaneously processed. One in the reagent step and one in the wax step for higher throughput.

Unmatched processing times



Enabling same-day diagnosis with a flexible and adaptable fast processing schedule

Specimen thickness	Rapid protocols. Fully automated	Improved workflow with sequential processing in continuous batch mode
1 mm (i.e. GI/Endoscopic biopsies)	Full batch* processed in 2 h 10 minutes (excluding fixation)	Batch* loading every 1 h 47 minutes
3 mm	Full batch* processed in 3 h 34 minutes (excluding fixation)	Batch* loading every 2 h 31 minutes
5 mm	Full batch* processed in 5 h 54 minutes (excluding fixation)	Batch* loading every 3 h 34 minutes

Note: The above timing are referred to ethanol/isopropanol 2 layers protocols, excluding reagent movement.

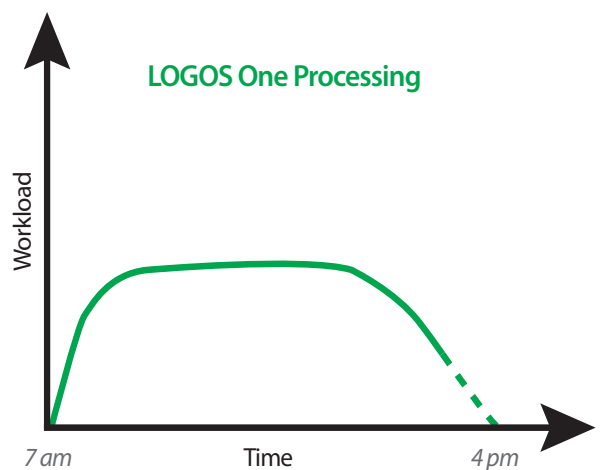
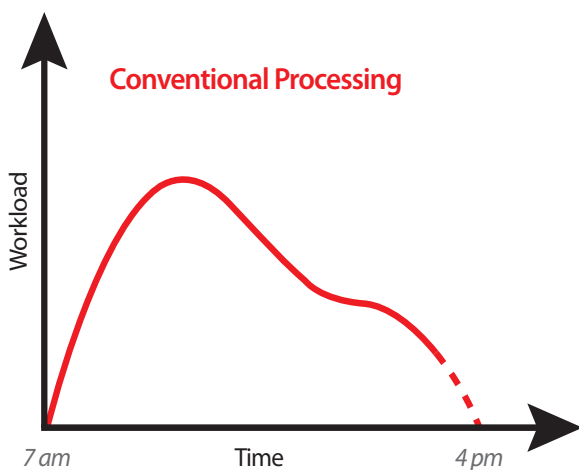
* Up to 140 cassettes with 1 gallon containers and up to 210 cassettes with 5 liter reagent jars

LOGOS One. Less stressful workload distribution

Throughout the day the histotech can process urgent and small biopsies, on demand. These samples/biopsies, which can constitute 40-60% of the workload of a histopathology lab, are rapidly processed.

The short processing time allows embedding, cutting and staining of specimens so that slides are available to the pathologist on the same day.

The remaining cassettes can be automatically processed during the night.



LOGOS One. Green, safe and economical

Packed with the latest technology for improved work environment

"Soft-close" cover for enhanced safety

Heated PTFE coated internal surface to avoid condensation of reagents for consistent processing and enhanced operator safety

Open system. No proprietary reagent commitments. Use of histology grade wax.



Swing-up control panel cover for easy access to condensation traps

Easy, safe transfer of exhausted wax through heated PTFE connector

No transfer of reagents to tanks



5 l containers

Direct transfer of solutions from commercial containers (5 l or 1 US gal) into processing retort. Slide-out ventilated reagent drawer.



1 US gal containers

Milestone world market leadership

- ✓ Largest installed base of rapid tissue processors
- ✓ Over 1,600 units in operation worldwide
- ✓ The de facto standard in rapid processing
- ✓ Lowest cost of ownership
- ✓ The highest quality of application and service support



LOGOS One. Software like never before. We could not make it more intuitive



- 1 Enter the appropriate user level. The operator can recall and run existing processing protocols. Only the administrator can modify programs or store new ones.

- 2 The administrator can easily setup a new protocol by selecting the desired settings from the touchscreen interface.

- 3 The complete summary of the new protocol is displayed for approval or modification before starting the process.



Intuitive touch display. Icon-driven, user friendly.

Number	Type	Description	Date	Time	User	L1	L2	L3	L4
196	Act	Wax status red	20 Apr.11	16:22:27	Service	1	0	1	0
195	Act	Protection cover open	20 Apr.11	16:21:27	---	1	0	1	0
194	Act	Reagents status green	20 Apr.11	16:21:27	---	1	0	1	0
193	Act	Application started	20 Apr.11	16:21:25	---	1	0	1	0
192	Act	Wax status red	20 Apr.11	16:17:02	Service	1	0	1	0
191	Act	Protection cover open	20 Apr.11	16:16:02	---	1	0	1	0
190	Act	Reagents status green	20 Apr.11	16:16:02	---	1	0	1	0
189	Act	Application started	20 Apr.11	16:16:00	---	1	0	1	0
188	Act	Wax status red	20 Apr.11	16:06:00	Service	1	0	1	0
187	Act	Protection cover open	20 Apr.11	16:04:59	---	1	0	1	0
186	Act	Reagents status green	20 Apr.11	16:04:59	---	1	0	1	0
185	Act	Application started	20 Apr.11	16:04:58	---	1	0	1	0
184	Act	Wax status red	20 Apr.11	15:41:59	Service	1	0	1	0
183	Act	Protection cover open	20 Apr.11	15:40:59	---	1	0	1	0
182	Act	Reagents status green	20 Apr.11	15:40:59	---	1	0	1	0
181	Act	Application started	20 Apr.11	15:40:58	---	1	0	1	0
180	Act	Wax status red	20 Apr.11	15:39:35	Service	1	0	1	0
179	Act	Protection cover open	20 Apr.11	15:38:35	---	1	0	1	0
178	Act	Reagents status green	20 Apr.11	15:38:35	---	1	0	1	0

- 4 An event log lists all activities carried out with the unit, providing documentation for service and quality assurance purposes.

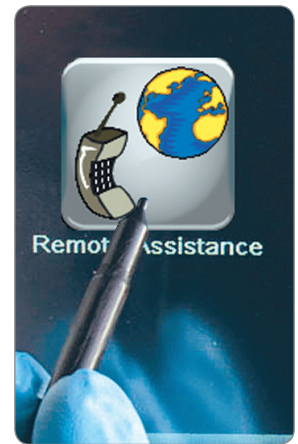
MilesNET. Remote diagnostic system

An advanced system of remote assistance through a standard internet connection. It dramatically reduces downtime increasing the efficiency of your laboratory. MilesNET allows Milestone's service department to:

- Verify the function of the entire unit and each sensor or device
- Install software upgrades
- Run a fast diagnosis of problems
- Schedule the appropriate preventive maintenance
- Collect all data. "No Guessing".

MilesNET minimizes:

- LOGOS One downtime
- Time to repair
- Diagnostic time on phone
- Recovery time

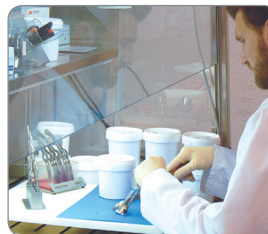


With the LOGOS One everyone benefits



Patient

- Minimize stress of waiting for diagnosis
- Elimination of needless anguish
- More timely start of needed treatment



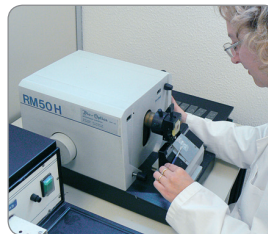
Grossing Room Operator

- No need to modify your grossing procedures
- No need to standardize on 1.5/2.5 mm



Pathologist

- Reduce stress through better control of workload
- Same-day diagnosis of permanent slides available on demand



Histologist

- Process as required: 70-140-210 cassettes
 - Process with no transfer of reagents from commercial containers.
- Four conventional reagents only



Lab Manager

- Improved workflow with night and day protocols
- Improved work environment
- Reduced cost



Oncologist and Clinician

- Within hours oncologists and clinicians can advise patients on the basis of the definitive diagnosis

MILESTONE



HELPING PATIENTS

MILESTONE Srl - Via Fatebenefratelli, 1/5 - 24010 Sorisole (BG) - Italy
Tel: +39 035 4128264 - Fax: +39 035 575498
www.milestonemedsrl.com - email: medical@milestonesrl.com

UNI EN ISO 9001: 2008 / UNI EN ISO 13485:2004 CERTIFIED

MILESTONE MEDICAL TECHNOLOGIES, INC.

6475 Technology Avenue, Suite F, Kalamazoo, MI 49009 - USA
Tel: 269-488-4950 - Toll-free: 866-995-5300 - Fax: 269-488-4949
www.milestonemed.com - email: info@milestonemed.com

In your country: