

**THARMAC**  
*Cellspin®*



*Cellspin®*  
*I and II*

## CYTOCENTRIFUGES

FOR THE PRODUCTION OF

- » Thin-layer cell preparations
- » Monolayer cell preparations

**QUALITY**  
» MADE IN  
GERMANY

# CYTOCENTRIFUGES

*Cellspin*<sup>®</sup>

## THE TOP-END PRODUCT FROM THARMAC<sup>®</sup>

Easy to use – reliable results

*Cellspin*<sup>®</sup> cytocentrifuges from THARMAC<sup>®</sup>, the world market leader for cytocentrifuges made in Germany, combine fast and reliable results with exceptionally simple operation. Is your laboratory growing? *Cellspin*<sup>®</sup> grows with you!

The unique Quickchange<sup>®</sup> system supports effective working, even with high sample volumes. Whether it be small or large volumes – *Cellspin*<sup>®</sup> delivers the right solution for every requirement. The large selection of consumables allows all of the samples to be processed in the same way and, thanks to the Double Cellfunnel<sup>®</sup> you are even able to double your sample throughput while effortlessly maintaining the same high standard of quality.

*Cellspin*<sup>®</sup> FROM THARMAC<sup>®</sup> – QUALITY MADE IN GERMANY



*Cellspin*<sup>®</sup> I

## FLEXIBILITY & RELIABILITY – ADVANTAGES THAT IMPRESS

- » The only cytocentrifuge that grows with your laboratory's demands
- » Available as a 4, 8 and 12-position cytocentrifuge
- » Rotors can be extended at any time
- » Open and closed cytorotors for open or protected working
- » Can be used both as a cytocentrifuge and a laboratory centrifuge
- » For diagnostic purposes in human and veterinary medicine
- » Can be used in cytology, urology, microbiology, haematology, virology, oncology and many more
- » *Cellspin*<sup>®</sup> uses familiar monolayer filter cards
- » Suitable for volumes from 0.1 to 5 ml
- » Quickchange<sup>®</sup> for quick working with high sample numbers
- » Double Cellfunnel<sup>®</sup> to double capacity with high sample numbers
- » Temperature control for special diagnostic procedures\*
- » Can be combined with Shandon<sup>™</sup> Cytospin<sup>™</sup>
- » **Quality – made in Germany**

\*only *Cellspin*<sup>®</sup> IIR

*Cellspin*<sup>®</sup> II



# CYTOCENTRIFUGES

## ROTORS

## CYTOCENTRIFUGATION OR SEDIMENTATION?

The rotor has the power!

Our *Cellspin® I* and *Cellspin® II* can be configured entirely according to your individual requirements. We offer you the perfect answer for every cytology question. The unique Quickchange® system allows rotors to be changed in seconds. One device, endless applications. The choice is yours!

### 101 – THE CLOSED, REMOVABLE CYTOROTOR WITH QUICKCHANGE®

- » Available as a 4, 8 and 12-position cytorotor (the picture shows the 8-position cytorotor)
- » Processes up to 24 samples simultaneously
- » Protects staff and the samples when loading, during use and when unloading (e.g. under a safety workbench)



Art.-No. 101

### 370 – THE OPEN, REMOVABLE CYTOROTOR WITH QUICKCHANGE®

- » Available as a 4, 8 and 12-position cytorotor (the picture shows the 8-position cytorotor)
- » Processes up to 24 samples simultaneously
- » Rapid rotor changes allow the readying of further samples in a second rotor during preparation and therefore a significant increase in sample throughput



Art.-No. 370

### **750 – THE OPEN, REMOVABLE EASY ROTOR**

- » Cyt rotor especially as an supplement to the Shandon™ Cytospin™
- » Processes up to 24 samples simultaneously



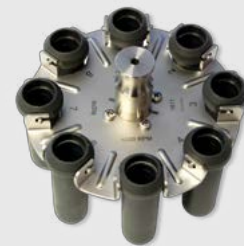
Art.-No. 750

### **105 – THE CLOSED, REMOVABLE EASY ROTOR**

- » Cyt rotor especially as an supplement to the Shandon™ Cytospin™
- » Processes up to 24 samples simultaneously

### **380 – THE SWING-OUT ROTOR WITH QUICKCHANGE® FOR 15 ML CENTRIFUGE TUBES**

- » Sedimentation rotor for up to 8 centrifuge tubes
- » Suitable for 15 ml centrifuge types ("Falcon" type)
- » With Quickchange® for a quick change between cytocentrifuge and laboratory centrifuge



Art.-No. 380

### **381 – THE SWING-OUT ROTOR WITH QUICKCHANGE® FOR 50 ML CENTRIFUGE TUBES**

- » Sedimentation rotor for up to 6 centrifuge tubes
- » Suitable for 50 ml centrifuge types ("Falcon" type)
- » With Quickchange® for a quick change between cytocentrifuge and laboratory centrifuge



Art.-No. 381, partially with 382

### **382 – THE ADAPTER (COMPATIBLE WITH 381)**

- » Reduction to 15 ml centrifuge tubes ("Falcon" type)

All open cytorotors are also available as fixed-installation variants!

# CYTOCENTRIFUGES

## TECHNICAL SPECIFICATIONS

### Cellspin® I



### Cellspin® II



#### Sample volumes

- » Single Cellfunnel®: 0.5 ml
- » Double Cellfunnel®: 2x 0.5 ml
- » ECOfunnel®: 5 ml

- » Single Cellfunnel®: 0.5 ml
- » Double Cellfunnel®: 2x 0.5 ml
- » ECOfunnel®: 5 ml

#### Performance

- » 6.000 RPM\*
- 208-240V/50-60Hz
- 115V/60Hz
- \*with CellClip rotor/swing-out rotor up to 2,000 RPM

- » 15.000 RPM\*
- 200-240V/50-60Hz
- 115V/60Hz
- \*with CellClip rotor/swing-out rotor up to 2,000 RPM

#### Rotors

- » CellClip rotors
  - Cyt rotor with 4, 8 or 12 positions
  - Removable or screwed-in
  - Open or closed
- » Swing-out rotors
  - Sedimentation rotor for 15 or 50 ml centrifuge tubes ("Falcon" type)

- » CellClip rotors
  - Cyt rotor with 4, 8 or 12 positions
  - Removable or screwed-in
  - Open or closed
- » Swing-out rotors
  - Sedimentation rotor for 15 or 50 ml centrifuge tubes ("Falcon" type)

#### Ease of operation

- » Ergonomic operation and information panel
- » Simple rotor changes thanks to Quickchange®

- » Ergonomic operation and information panel
- » Simple rotor changes thanks to Quickchange®
- » 10 memory slots

#### Control

- » Film keypad  
For precise, fast and simple entry of the parameters with option keys
- » Speed RPM  
d=100 RPM, from 500 RPM
- » Time t/min  
Input in minutes, up to 99 min
- » Pulse button  
for brief initial centrifugation
- » RCF button  
display of the approximate RCF during the run

- » Film keypad  
For precise, fast and simple entry of the parameters with option keys
- » Speed RPM or RCF  
d=100 RPM, from 500 RPM
- » Time t/min  
Input in minutes, up to 99 min
- » Pulse button  
for brief initial centrifugation
- » Toggle button RCF/RPM
- » Short start-up and braking times, even for rotors in the high-speed range
- » Selectable acceleration and deceleration in 9 stages

## Cellspin® I



## Cellspin® II



### Safety

- » Cover locking and retainer
- » Imbalance shut-off
- » Automatic rotor detection
- » Emergency unlocking
- » IEC 1010
- » Safety alarm to protect users and samples

- » Cover retainer
- » Imbalance shut-off
- » Automatic rotor detection
- » Emergency unlocking
- » IEC 1010
- » Safety alarm to protect users and samples
- » Motor overheating protection
- » Cover fall arrester
- » Vessel overheating protection

### Construction

- » Metal housing and cover
- » Centrifuge space made from rust-free stainless steel
- » Clip lock Viewing window in the cover

- » Metal housing and cover
- » Centrifuge space made from rust-free stainless steel
- » Viewing window in the cover

### Dimensions (h x w x d)

26 x 37 x 43 cm

35 x 40 x 70 cm

### Weight

Approx. 25 kg

Approx. 29 kg

### Temperature control

(only Cellspin® IIR)

- » Infinitely controllable from -20°C to +40°C
- » Pre-cooling function (fast cool)

**THARMAC**  
*Cellspin*<sup>®</sup>

**THARMAC GmbH**

Hasselborner Straße 19 - 21 » D-35647 Waldsolms » FON: +49(0) 60 85-98 99 10

FAX: +49(0) 60 85-98 99 119 » [info@tharmac.de](mailto:info@tharmac.de) » [www.tharmac.de](http://www.tharmac.de)